



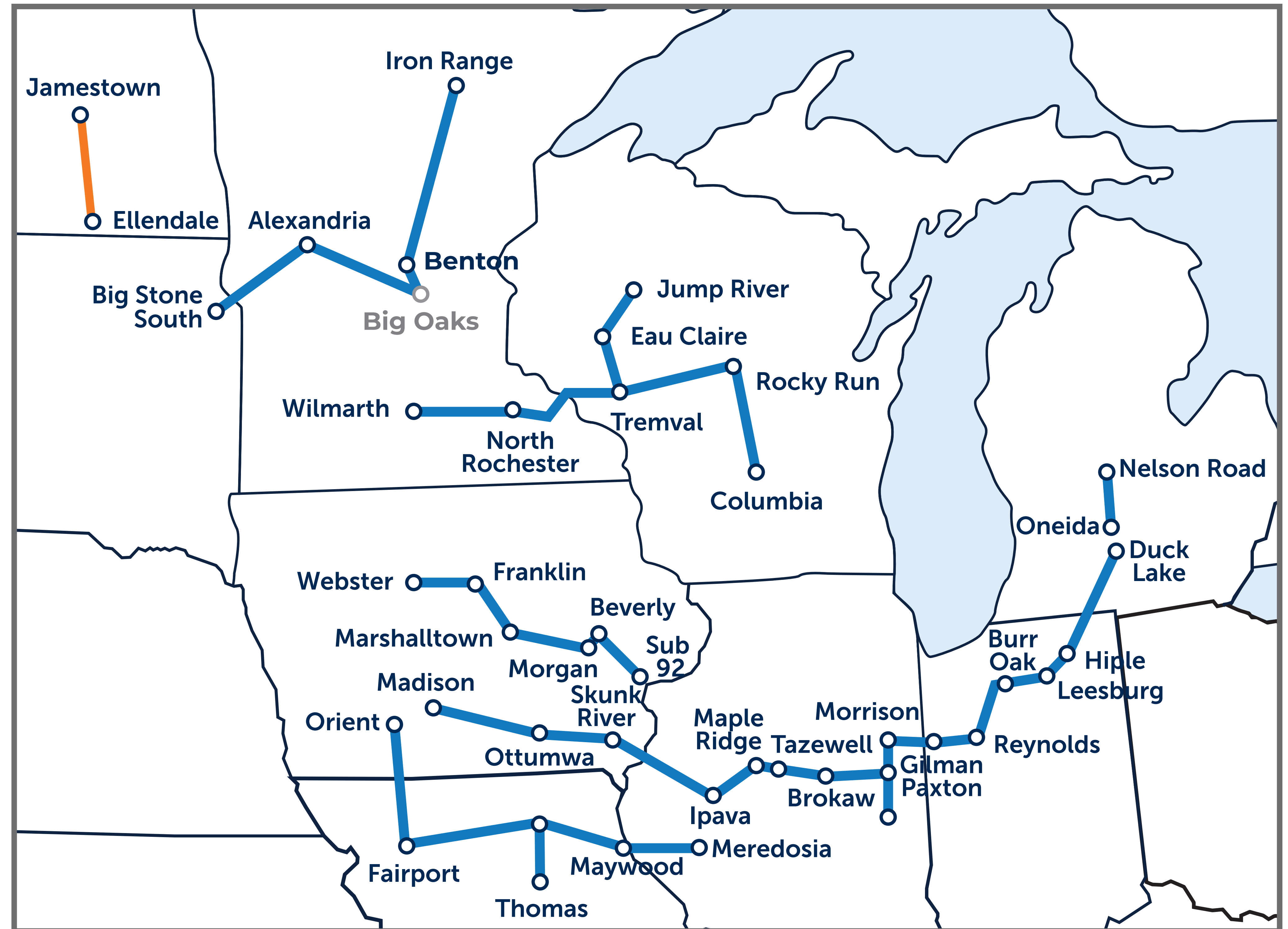
# WELCOME

## PUBLIC OPEN HOUSE



Both Otter Tail Power Company and Montana-Dakota Utilities belong to the Midcontinent Independent System Operator organization, also referred to as MISO.

MISO is a non-profit, member-based regional transmission organization that provides reliable, cost-effective electric systems and operations; dependable and transparent prices; open access to markets; and planning for long-term efficiency.



**MISO** has approved 18 new transmission projects throughout the Midwest that are needed by 2030 to ensure a **reliable** and **resilient** transmission system in the future.

**Otter Tail Power Company** and **Montana-Dakota Utilities** are proposing a new 345-kilovolt (kV) transmission line between Otter Tail Power's existing Jamestown Substation and Montana-Dakota Utilities' existing Ellendale Substation.

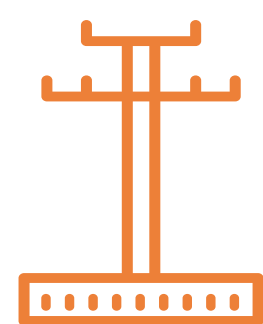
The project will benefit the region by helping to:



Ensure electric reliability



Increase resiliency to extreme weather conditions

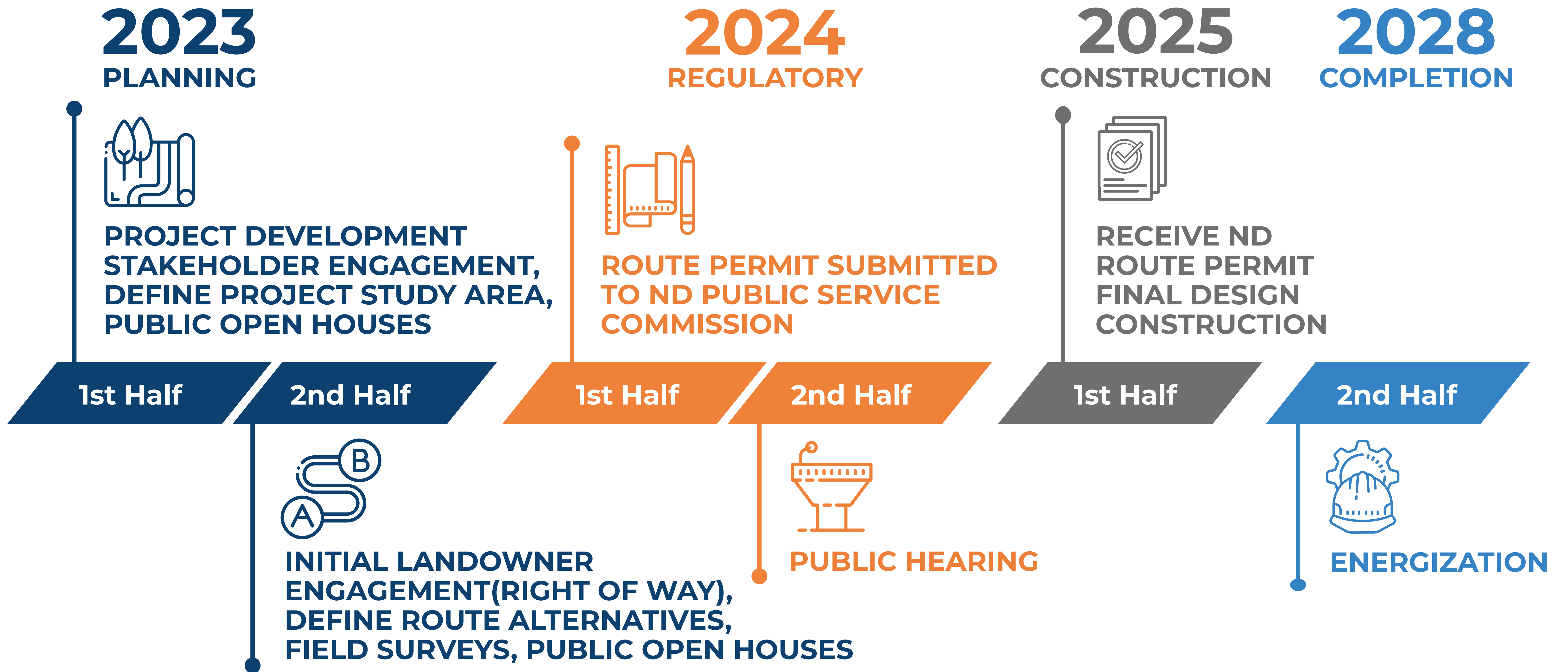


Reduce transmission congestion



Increase access to low-cost energy

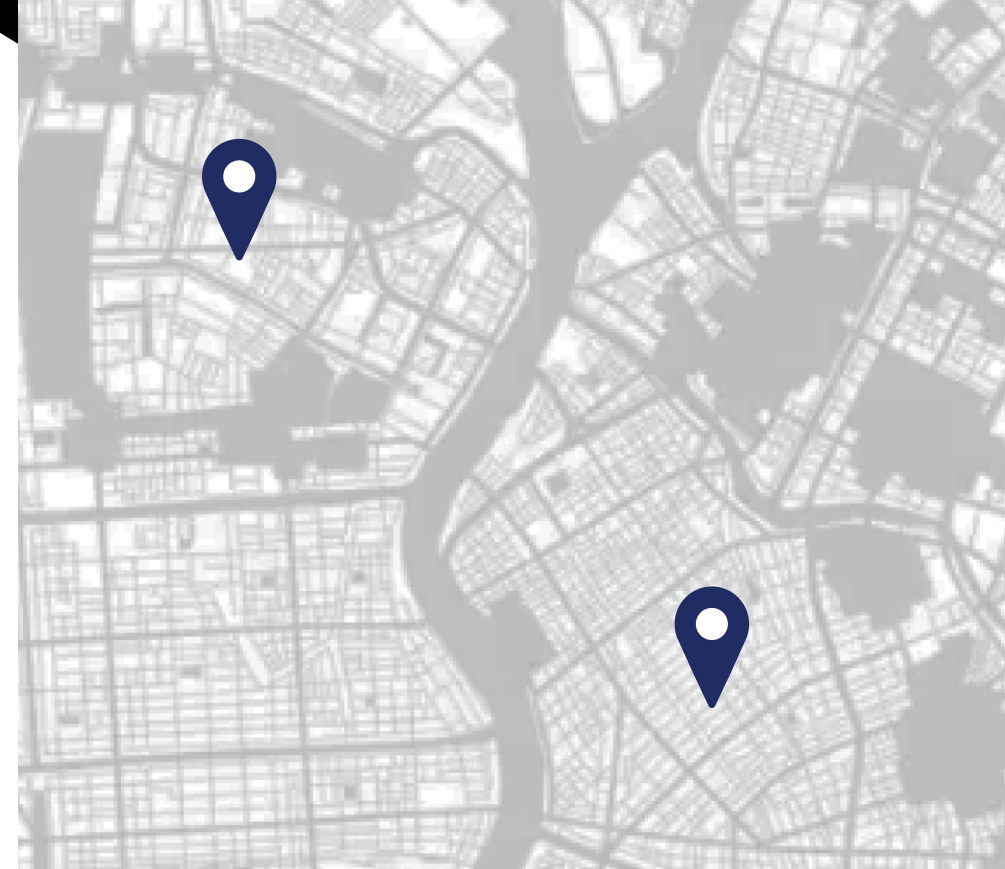




*Schedule is subject to change.*

☆ WE ARE HERE

## 1. STUDY AREA



With an established project need from MISO, we identified a large study area that contained both substations.

## 2. PROJECT CORRIDORS



We then analyzed the study area to identify project corridors where construction may be possible.

## 3. PUBLIC OPEN HOUSE



Community input provides information on opportunities and challenges with the project corridors.

## 4. ROUTE ALTERNATIVES



Using community feedback, we'll continue narrowing the project corridors and developing a number of potential route alternatives.

## 5. PUBLIC OPEN HOUSE



A second open house provides opportunity for additional community feedback on different route alternatives.

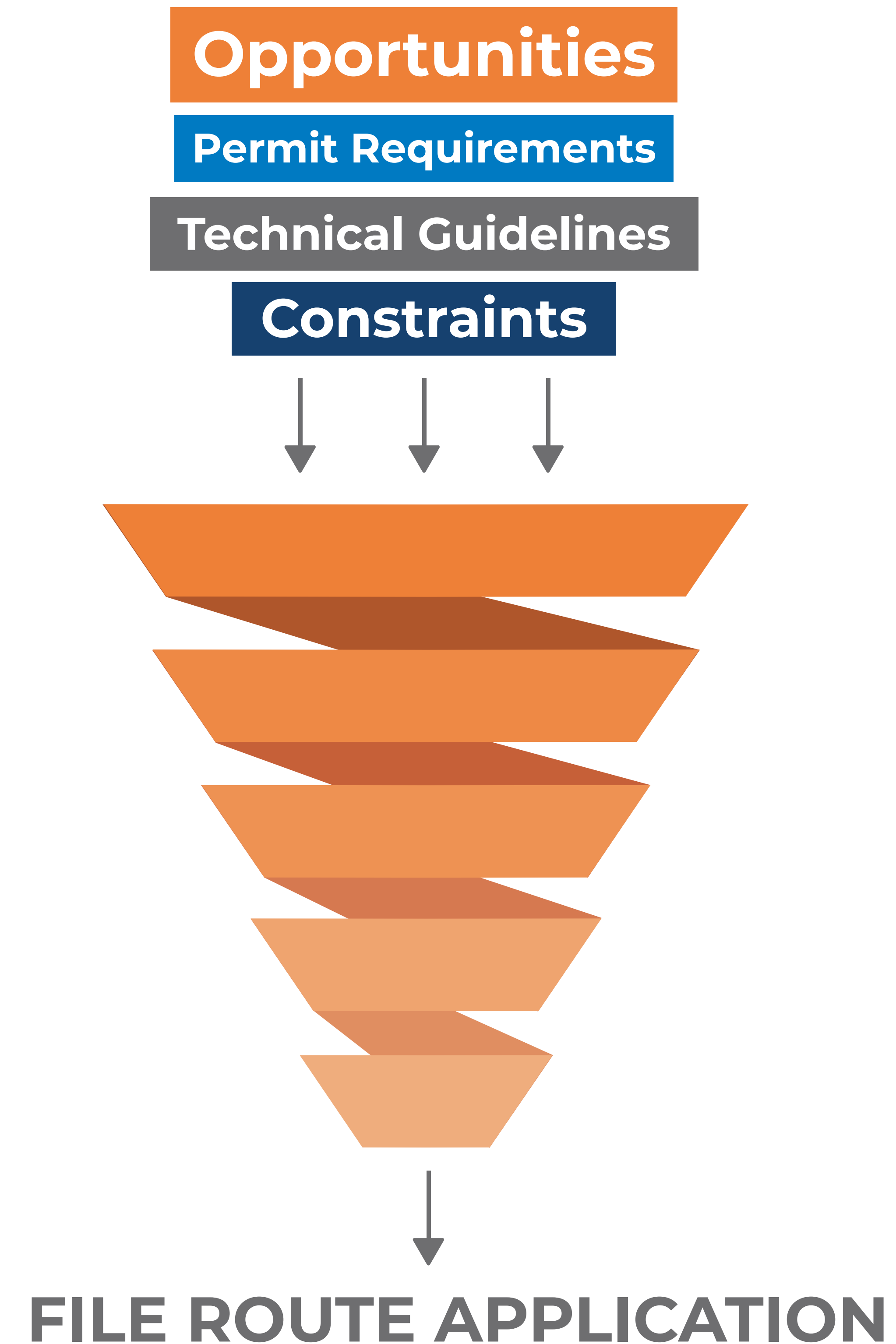
## 6. PROPOSED ROUTE



A proposed route will be selected and submitted to the Public Service Commission, who will review and hold a public hearing before making a decision on the route permit.

We'll hold meetings with agencies and the public throughout the study area to gather feedback and information helpful to our routing team in developing potential line routes.

After carefully considering that input and evaluating opportunities, constraints, permit requirements, and technical guidelines, we'll identify route options.



## **?** What is Right of Way?

Right of way is a portion of land needed for the construction, operation, and maintenance of the transmission line, typically about 150-foot-wide. Right of way is secured through negotiation and acquisition of an easement agreement.

## **?** What is an Easement?

An easement is the legal document that allows Otter Tail Power Company and Montana-Dakota Utilities to construct, survey, and maintain transmission structures and lines on your property.

A **150-foot-wide easement** will be necessary to construct, operate, and maintain the proposed transmission line.

## **?** What is Right of Entry?

To assess potential routes and conduct the necessary environmental, engineering, and geologic studies/surveys, right-of-way agents will work with landowners and residents to acquire a temporary right-of-entry agreement. This agreement does not give permission for construction.

**?** **What can I expect?** Right-of-way agents will reach out to landowners in potential routing areas to discuss right of way needs.

**01.**



Landowners in the project area will be notified of the project and right-of-way agents will reach out to begin the acquisition process.

**02.**



A right-of-way agent will present the landowner an easement based on the fair market value.

**03.**



We'll work with landowners to resolve any questions or concerns, coming to an agreement to grant an easement.

**04.**



Once the project receives final approval, the utilities construct, operate, and maintain the transmission line.

You will be involved throughout the process, and if you have any questions or concerns, our right-of-way agents will work with you!

## ONGOING OUTREACH

Long before construction begins, right-of-way agents will be out coordinating with landowners, local government agencies, and other stakeholders. You will be involved throughout the process, and if you have any questions or concerns, our right-of-way agents will work with you!

1.



**Surveys**

2.



**Temporary Access**

3.



**Foundation Drilling & Pouring**

4.



**Structure Setting**

5.



**Conductor Stringing**

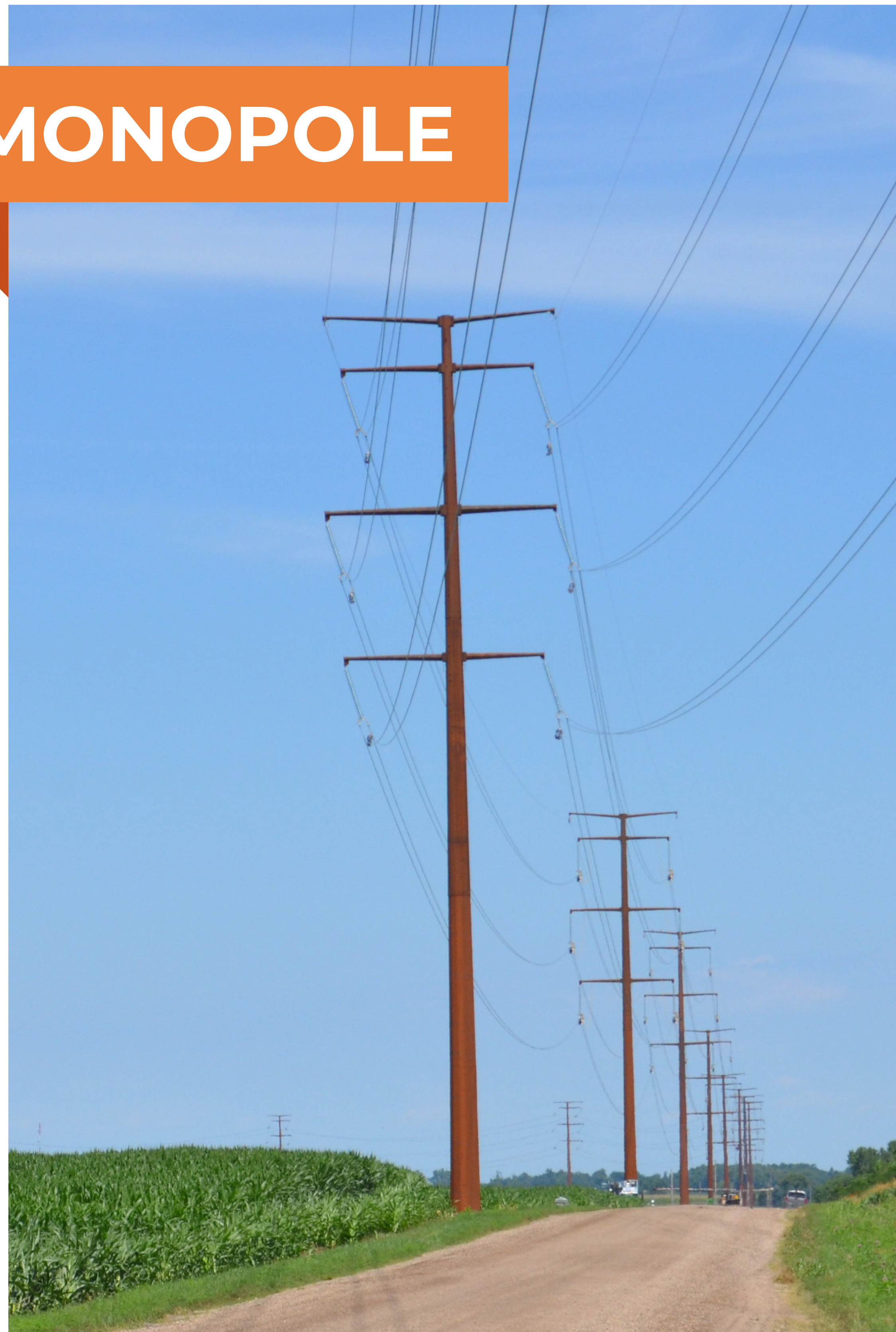
6.



**Restoration**



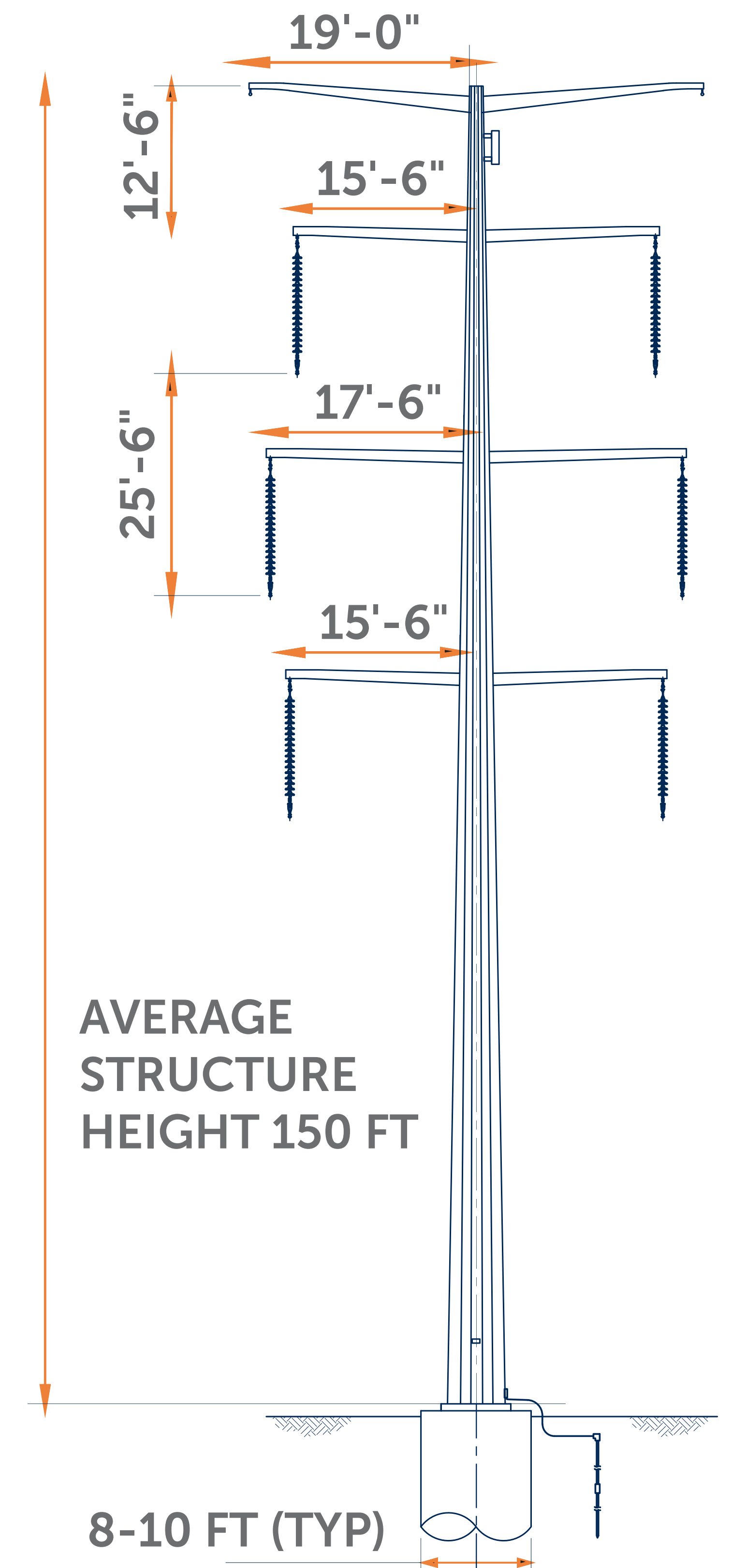
## MONOPOLE



**The typical structure will be 150 feet tall.**

The structure type may vary across the project but primarily will be comprised of single pole, self-weathering steel with double circuit capability, meaning it can support a second set of conductors.

There will be three phases of conductors and two overhead shield wires—one will be an optical ground wire (OPGW) and the other stranded steel (overhead ground wire).



**Stay Informed**

To stay up-to-date on the project, you can visit our website at:



[www.JamestowntoEllendale.com](http://www.JamestowntoEllendale.com)

Use your phone's camera to scan the QR code.



**Get connected as we provide more information regarding the development and permitting efforts for this project.**

Our next round of public meetings will be later this year. We hope you are able to join us as we provide more information regarding project development, permitting, and the regulatory process for this project.

There will be many opportunities to participate throughout the project development and permitting processes. You can submit feedback, attend public meetings, ask questions, and learn more!



**Questions or comments about the project?**

[connect@jamestowntoellendale.com](mailto:connect@jamestowntoellendale.com)

(888) 794-6243